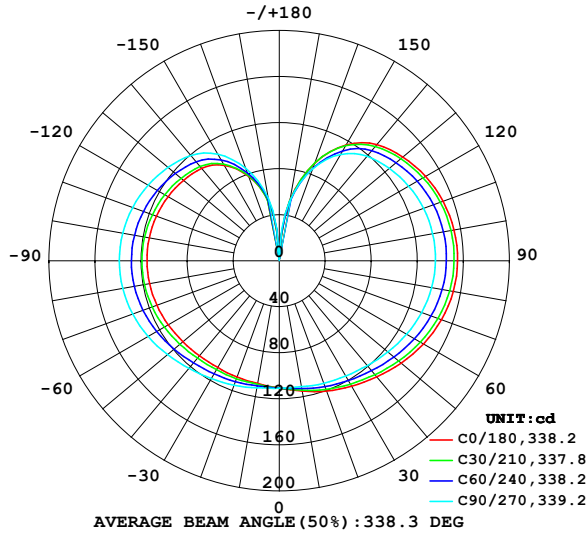


LUMINAIRE PHOTOMETRIC TEST REPORT

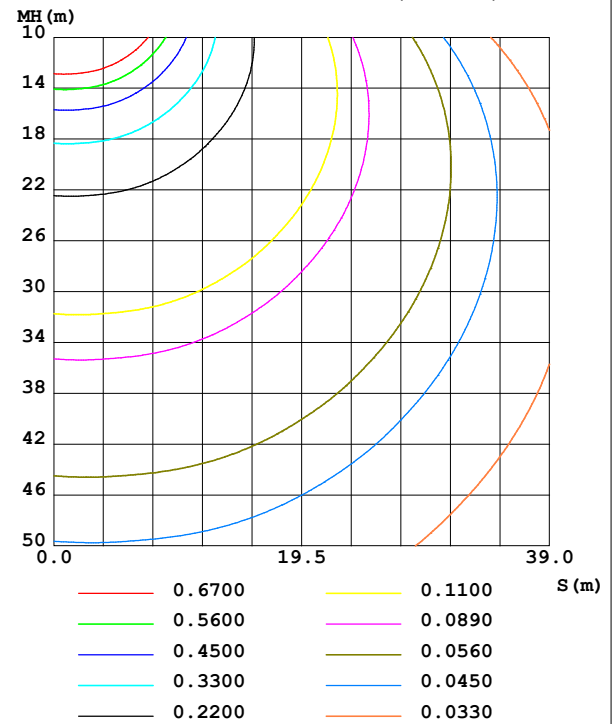
NAME: 99LED839WW	TYPE:	WEIGHT: 1
SPEC.:	DIM.: F90	SERIAL No.: 0
MFR.: Elmark Industries JSC	SUR.: round	Shielding Angle:

DATA OF LAMP		PHOTOMETRIC DATA			
MODEL	99LED839WW	I _{max} (cd)	155.2	S/MH (C0/180)	1.49
NOMINAL POWER (W)	12	LOR (%)	103.2	S/MH (C90/270)	1.67
RATED VOLTAGE (V)	230	TOTAL FLUX (lm)	1569.5	η UP, DN (C0-180)	25.4, 26.2
NOMINAL FLUX (lm)	1521	CIE CLASS	DIFFUSE	η UP, DN (C180-360)	25.3, 26.3
LAMPS INSIDE	1	η up (%)	50.7	CIBSE SHR NOM	2.00
TEST VOLTAGE (V)	230	η down (%)	52.5	CIBSE SHR MAX	2.00

LUMINOUS INTENSITY DISTRIBUTION DIAGRAM



C0 PLANE ISOLUX DIAGRAM (UNIT:lx)



C Range: 0 - 360DEG
C Interval: 10.0DEG
Test Speed: MEDIUM
Temperature: 25.3°C
Operators:
Test Date: 20 October 2022

γ Range: 0 - 180DEG
γ Interval: 2.5DEG
Test System: EVERFINE GO-2000A_V1 SYSTEM V2.00.456
Humidity: 65.0%
Test Distance: 6.265m [K=1.0000]
Remarks:

ZONAL FLUX DIAGRAM

ZONAL FLUX DIAGRAM:

γ	C0	C45	C90	C135	C180	C225	C270	C315	γ	Φ zone	Φ total	%lum, lamp
10	114.8	113.5	111.1	108.9	108.2	109.6	112.0	114.2	0- 10	10.61	10.61	0.68,0.70
20	120.5	117.8	113.3	109.1	107.6	110.4	115.2	119.2	10- 20	32.02	42.63	2.72,2.8
30	125.9	122.1	115.6	109.3	107.1	111.2	118.3	124.1	20- 30	53.43	96.07	6.12,6.32
40	131.7	127.1	119.0	110.7	107.8	113.0	122.2	129.6	30- 40	74.39	170.5	10.9,11.2
50	138.3	133.0	123.2	113.1	109.4	115.8	126.9	135.8	40- 50	94.73	265.2	16.9,17.4
60	144.7	138.8	127.7	116.0	111.4	118.9	131.6	141.8	50- 60	113.7	378.9	24.1,24.9
70	149.9	143.8	131.7	118.6	113.2	121.4	135.5	146.8	60- 70	129.9	508.8	32.4,33.4
80	153.5	147.4	134.5	120.6	114.4	123.1	138.1	150.2	70- 80	141.8	650.6	41.5,42.8
90	154.9	149.0	135.7	121.5	114.9	123.6	138.9	151.5	80- 90	148.3	798.8	50.9,52.5
100	154.2	148.6	135.4	121.2	114.7	123.0	138.1	150.6	90-100	148.5	947.4	60.4,62.3
110	151.4	146.1	133.4	119.6	113.5	121.1	135.6	147.7	100-110	142.6	1090	69.4,71.7
120	146.7	141.7	129.9	117.0	111.6	118.3	131.6	142.9	110-120	130.9	1221	77.8,80.3
130	140.2	135.5	124.9	113.4	108.8	114.4	126.2	136.4	120-130	114.5	1335	85.1,87.8
140	131.8	127.6	118.7	108.7	104.9	109.5	119.5	128.1	130-140	94.50	1430	91.1,94
150	116.3	113.2	106.8	98.62	95.84	98.78	107.0	113.9	140-150	71.25	1501	95.6,98.7
160	90.42	88.29	84.84	80.23	78.13	80.10	85.61	91.26	150-160	44.83	1546	98.5,102
170	53.46	51.80	52.40	52.28	51.37	51.13	55.20	55.21	160-170	20.22	1566	99.8,103
180	1.494	1.491	1.489	1.492	1.499	1.491	1.492	1.494	170-180	3.272	1569	100,103
DEG	LUMINOUS INTENSITY:cd									UNIT:lm		

Conical surface Flux(90deg): 215.33 lm

%lum = 13.7%
%lamp = 14.2%

Conical surface Flux(130deg): 442.03 lm

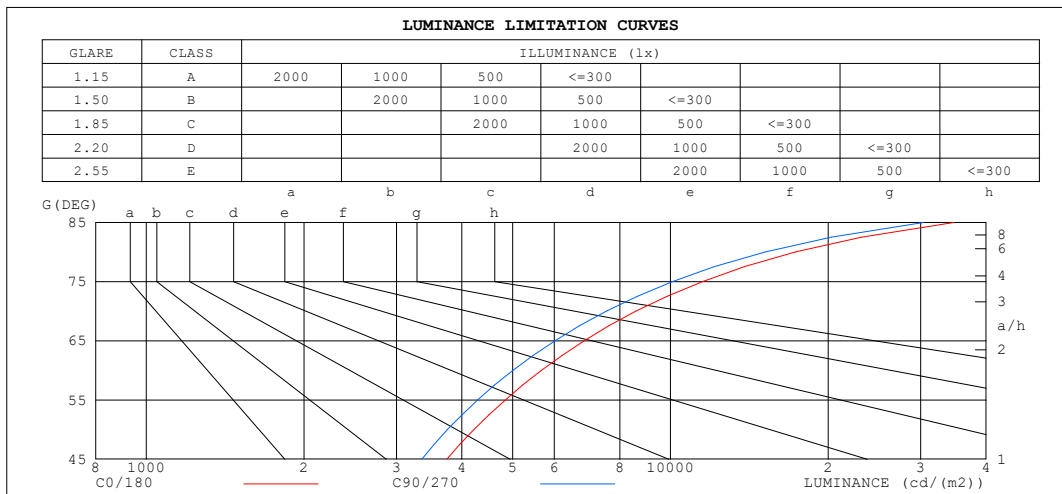
%lum = 28.2%
%lamp = 29.1%

C Range: 0 - 360DEG
C Interval: 10.0DEG
Test Speed: MEDIUM
Temperature:25.3°C
Operators:
Test Date:20 October 2022

γ Range: 0 - 180DEG
 γ Interval: 2.5DEG
Test System:EVERFINE GO-2000A_V1 SYSTEM V2.00.456
Humidity:65.0%
Test Distance:6.265m [K=1.0000]
Remarks:

LUMINANCE LIMITATION CURVES

NAME: 99LED839WW	TYPE:	WEIGHT: 1
SPEC.:	DIM.: F90	SERIAL No.: 0
MFR.: Elmark Industries JSC	SUR.: round	Shielding Angle:



LUMINANCE cd/(m2)		
G (DEG)	C0/180	C90/270
85	34734	30410
80	17323	15170
75	11506	10085
70	8591	7542
65	6840	6016
60	5672	5004
55	4837	4285
50	4216	3755
45	3741	3353

C Range: 0 - 360DEG
C Interval: 10.0DEG
Test Speed: MEDIUM
Temperature: 25.3°C
Operators:
Test Date: 20 October 2022

γ Range: 0 - 180DEG
γ Interval: 2.5DEG
Test System: EVERFINE GO-2000A_V1 SYSTEM V2.00.456
Humidity: 65.0%
Test Distance: 6.265m [K=1.0000]
Remarks:

```

γ Range: 0 - 180DEG
γ Interval: 2.5DEG
Test System:EVERFINE GO-2000A_V1 SYSTEM V2.00.456
Humidity:65.0%
Test Distance:6.265m [K=1.0000]
Remarks:

```

WEC AND CCEC

NAME: 99LED839WW	TYPE:	WEIGHT: 1
SPEC.:	DIM.: F90	SERIAL No.: 0
MFR.: Elmark Industries JSC	SUR.: round	Shielding Angle:

pcc	80%			70%			50%			30%			10%			0
pw	50%	30%	10%	50%	30%	10%	50%	30%	10%	50%	30%	10%	50%	30%	10%	0
pfc	20%			20%			20%			20%			20%			0
RCR	RCR:Room Cavity Ratio						Wall Exitance Coefficients(WEC)									
0.0																
1.0	.420	.239	.076	.397	.226	.072	.354	.203	.065	.315	.182	.058	.278	.161	.052	
2.0	.351	.192	.059	.330	.182	.056	.291	.162	.050	.255	.143	.045	.221	.125	.039	
3.0	.306	.163	.049	.287	.154	.046	.251	.136	.041	.218	.120	.037	.187	.104	.032	
4.0	.273	.142	.042	.255	.134	.039	.222	.118	.035	.192	.103	.031	.163	.089	.027	
5.0	.246	.125	.036	.230	.118	.034	.200	.104	.031	.172	.091	.027	.145	.078	.023	
6.0	.224	.112	.032	.210	.106	.030	.182	.093	.027	.156	.081	.024	.131	.069	.021	
7.0	.206	.102	.029	.193	.096	.027	.167	.084	.024	.143	.073	.021	.120	.062	.018	
8.0	.191	.093	.026	.178	.088	.025	.154	.077	.022	.132	.067	.019	.110	.057	.017	
9.0	.177	.086	.024	.166	.081	.023	.143	.071	.020	.122	.061	.018	.102	.052	.015	
10.0	.166	.079	.022	.155	.075	.021	.134	.066	.018	.114	.057	.016	.095	.048	.014	

pcc	80%			70%			50%			30%			10%			0
pw	50%	30%	10%	50%	30%	10%	50%	30%	10%	50%	30%	10%	50%	30%	10%	0
pfc	20%			20%			20%			20%			20%			0
RCR	RCR:Room Cavity Ratio						Ceiling Cavity Exitance Coefficients (CCEC)									
0.0	.583	.583	.583	.498	.498	.498	.340	.340	.340	.195	.195	.195	.062	.062	.062	
1.0	.582	.549	.520	.498	.472	.448	.341	.324	.309	.196	.188	.180	.063	.060	.058	
2.0	.576	.528	.487	.494	.454	.421	.338	.314	.294	.195	.183	.172	.063	.059	.056	
3.0	.569	.512	.467	.488	.442	.405	.335	.307	.284	.193	.179	.167	.062	.058	.055	
4.0	.561	.500	.454	.482	.432	.394	.331	.301	.277	.192	.176	.164	.062	.057	.054	
5.0	.554	.491	.445	.476	.425	.387	.328	.297	.273	.190	.174	.162	.061	.057	.053	
6.0	.546	.483	.438	.470	.419	.381	.324	.293	.270	.188	.172	.160	.061	.056	.053	
7.0	.539	.477	.433	.464	.413	.378	.321	.290	.268	.186	.171	.159	.060	.056	.053	
8.0	.533	.472	.430	.459	.409	.375	.317	.287	.266	.185	.169	.158	.060	.056	.052	
9.0	.526	.467	.427	.454	.405	.372	.314	.285	.264	.183	.168	.158	.059	.055	.052	
10.0	.521	.463	.425	.449	.402	.371	.311	.283	.263	.182	.167	.157	.059	.055	.052	

C Range: 0 - 360DEG
C Interval: 10.0DEG
Test Speed: MEDIUM
Temperature:25.3°C
Operators:
Test Date:20 October 2022

γ Range: 0 - 180DEG
γ Interval: 2.5DEG
Test System:EVERFINE GO-2000A_V1 SYSTEM V2.00.456
Humidity:65.0%
Test Distance:6.265m [K=1.0000]
Remarks:

UGR(Unified Glare Rating) Table

NAME: 99LED839WW					TYPE:			WEIGHT: 1		
SPEC.:					DIM.: F90			SERIAL No.: 0		
MFR.: Elmark Industries JSC					SUR.: round			Shielding Angle:		
ceiling/cavity	0.7	0.7	0.5	0.5	0.3	0.7	0.7	0.5	0.5	0.3
walls	0.5	0.3	0.5	0.3	0.3	0.5	0.3	0.5	0.3	0.3
working plane	0.2	0.2	0.2	0.2	0.2	0.2	0.2	0.2	0.2	0.2
Room dimensions	Viewed crosswise					Viewed endwise				
x = 2H y = 2H	14.0	15.1	14.9	16.0	17.1	13.5	14.6	14.4	15.5	16.6
3H	17.4	18.4	18.3	19.3	20.5	16.8	17.8	17.7	18.7	19.9
4H	19.3	20.3	20.2	21.2	22.4	18.6	19.6	19.5	20.5	21.7
6H	21.4	22.3	22.3	23.2	24.5	20.7	21.6	21.6	22.5	23.7
8H	22.6	23.5	23.5	24.4	25.6	21.8	22.7	22.8	23.6	24.8
12H	24.0	24.8	24.9	25.7	26.9	23.2	24.0	24.1	24.9	26.1
4H 2H	15.0	15.9	15.9	16.9	18.0	14.7	15.6	15.6	16.5	17.7
3H	18.5	19.3	19.4	20.3	21.5	18.0	18.8	19.0	19.8	21.0
4H	20.5	21.3	21.5	22.2	23.5	20.0	20.7	20.9	21.7	23.0
6H	22.8	23.5	23.8	24.5	25.7	22.2	22.9	23.1	23.8	25.1
8H	24.1	24.7	25.0	25.7	27.0	23.4	24.0	24.4	25.0	26.3
12H	25.5	26.1	26.5	27.1	28.4	24.8	25.4	25.8	26.4	27.7
8H 4H	21.2	21.8	22.2	22.8	24.1	20.8	21.4	21.8	22.4	23.7
6H	23.8	24.3	24.8	25.3	26.6	23.3	23.8	24.3	24.8	26.1
8H	25.2	25.7	26.2	26.7	28.0	24.7	25.1	25.7	26.2	27.5
12H	26.9	27.3	27.9	28.3	29.7	26.3	26.7	27.3	27.7	29.1
12H 4H	21.4	22.0	22.4	23.0	24.3	21.1	21.6	22.0	22.6	23.9
6H	24.1	24.5	25.1	25.6	26.9	23.6	24.1	24.6	25.1	26.5
8H	25.6	26.0	26.6	27.1	28.4	25.2	25.6	26.2	26.6	27.9
Variations with the observer position at spacings(CIE Pub.117):										
S = 1.0H	+ 0.1 / - 0.1					+ 0.1 / - 0.1				
1.5H	+ 0.2 / - 0.3					+ 0.2 / - 0.3				
2.0H	+ 0.3 / - 0.4					+ 0.3 / - 0.4				

CIE Pub.117, 1521 lm Total Lamp Luminous Flux Correct (8log(F/F0) = 1.5)
Area: 0.0510446 m2

C Range: 0 - 360DEG
C Interval: 10.0DEG
Test Speed: MEDIUM
Temperature:25.3°C
Operators:
Test Date:20 October 2022

γ Range: 0 - 180DEG
γ Interval: 2.5DEG
Test System:EVERFINE GO-2000A_V1 SYSTEM V2.00.456
Humidity:65.0%
Test Distance:6.265m [K=1.0000]
Remarks:

UTILIZATION FACTORS TABLE

NAME: 99LED839WW	TYPE:	WEIGHT: 1
SPEC.:	DIM.: F90	SERIAL No.: 0
MFR.: Elmark Industries JSC	SUR.: round	Shielding Angle:

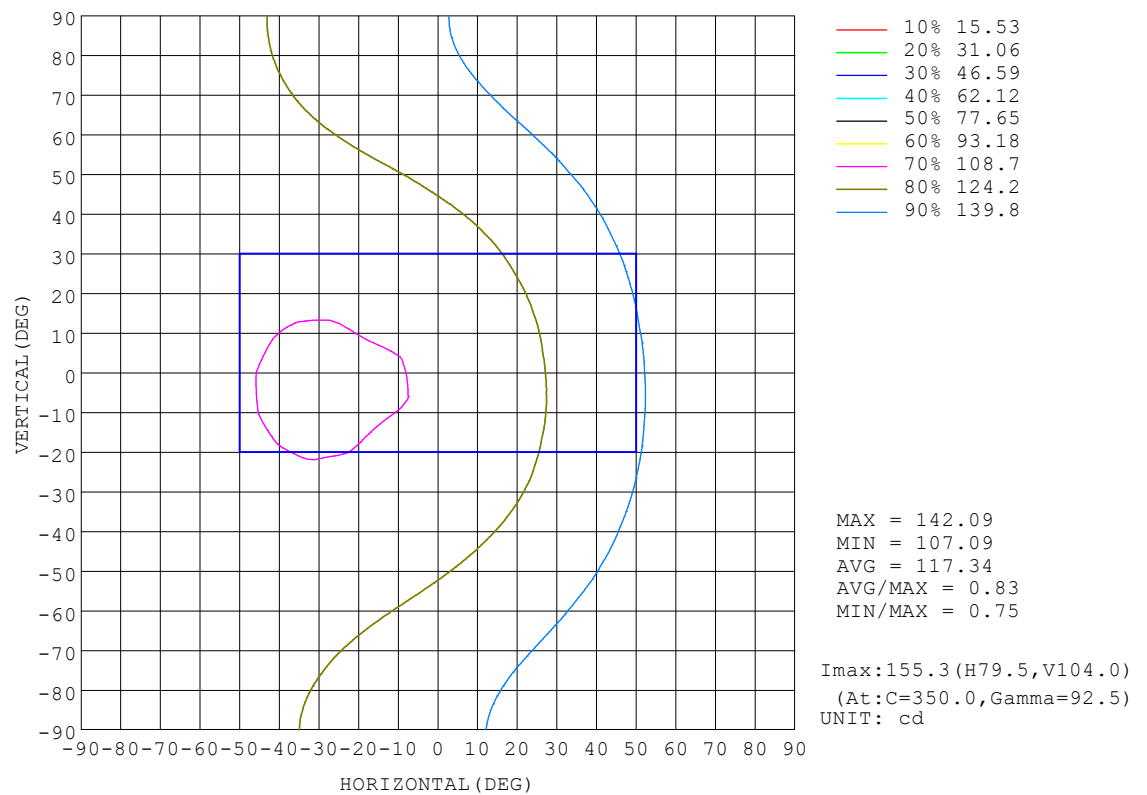
REFLECTANCE										
Ceiling	0.8	0.8	0.8	0.7	0.7	0.7	0.5	0.5	0.5	0
Walls	0.7	0.5	0.3	0.7	0.5	0.3	0.7	0.5	0.3	0
Working plane	0.2	0.2	0.2	0.2	0.2	0.2	0.2	0.2	0.2	0
ROOM INDEX	UTILIZATION FACTORS (PERCENT) $k(RI) \times RCR = 5$									
$k = 0.60$	38	25	17	36	24	17	32	22	16	8
0.80	47	32	24	44	31	23	39	28	21	11
1.00	54	39	30	50	37	29	44	35	26	14
1.25	61	46	37	57	44	35	49	39	31	17
1.50	66	52	42	62	49	40	53	43	35	20
2.00	74	61	51	69	57	48	59	49	42	24
2.50	79	67	58	73	63	54	62	54	47	26
3.00	84	72	63	77	67	59	65	58	51	29
4.00	89	79	71	82	74	66	69	63	57	33
5.00	93	84	77	85	78	71	72	66	61	35
ROOM INDEX	UF(total)									Direct
According to DIN EN 13032-2 2004			Suspended					SHRNOM = 1.25		

C Range: 0 - 360DEG
C Interval: 10.0DEG
Test Speed: MEDIUM
Temperature: 25.3°C
Operators:
Test Date: 20 October 2022

γ Range: 0 - 180DEG
γ Interval: 2.5DEG
Test System: EVERFINE GO-2000A_V1 SYSTEM V2.00.456
Humidity: 65.0%
Test Distance: 6.265m [K=1.0000]
Remarks:

ISOCANDELA DIAGRAM

NAME: 99LED839WW	TYPE:	WEIGHT: 1
SPEC.:	DIM.: F90	SERIAL No.: 0
MFR.: Elmark Industries JSC	SUR.: round	Shielding Angle:

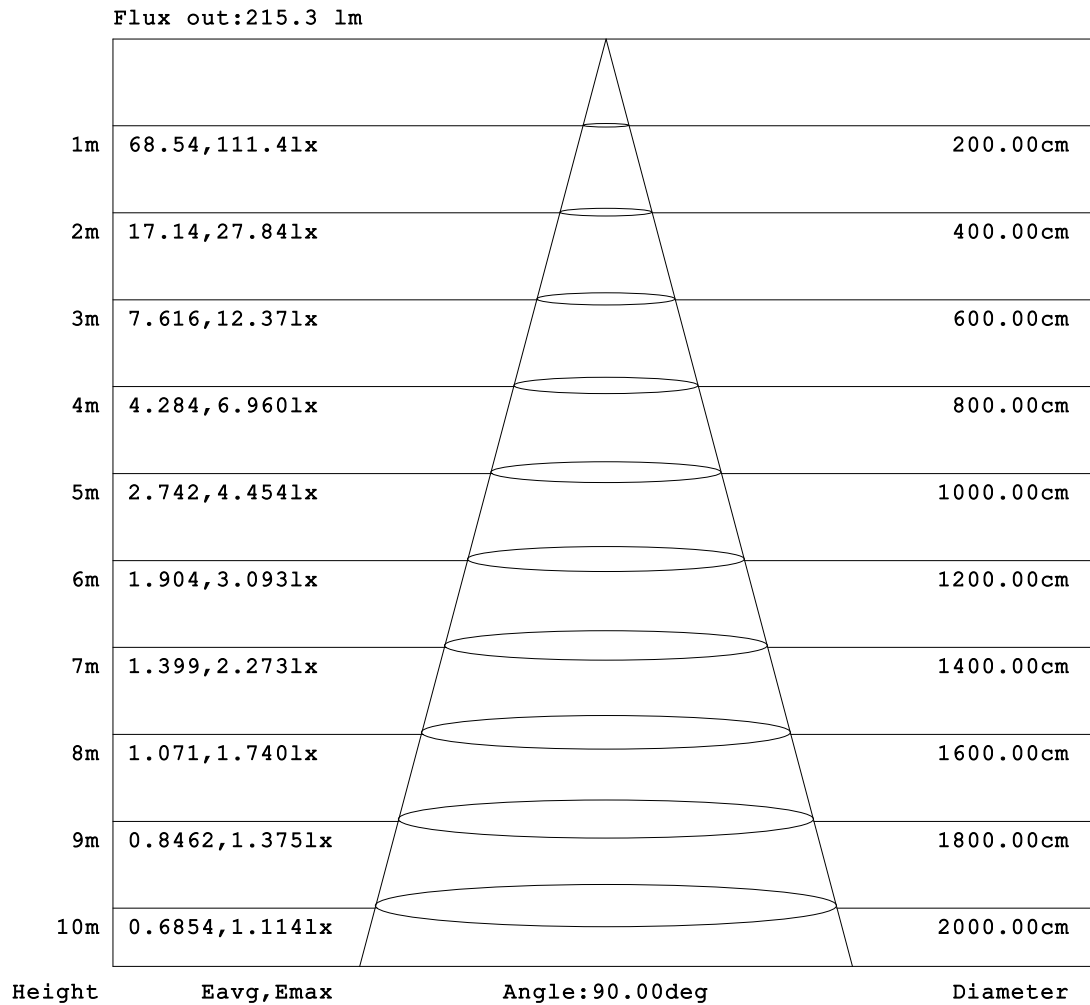


C Range: 0 - 360DEG
 C Interval: 10.0DEG
 Test Speed: MEDIUM
 Temperature:25.3°C
 Operators:
 Test Date:20 October 2022

γ Range: 0 - 180DEG
 γ Interval: 2.5DEG
 Test System:EVERFINE GO-2000A_V1 SYSTEM V2.00.456
 Humidity:65.0%
 Test Distance:6.265m [K=1.0000]
 Remarks:

AAI Figure

NAME: 99LED839WW	TYPE:	WEIGHT: 1
SPEC.:	DIM.: F90	SERIAL No.: 0
MFR.: Elmark Industries JSC	SUR.: round	Shielding Angle:



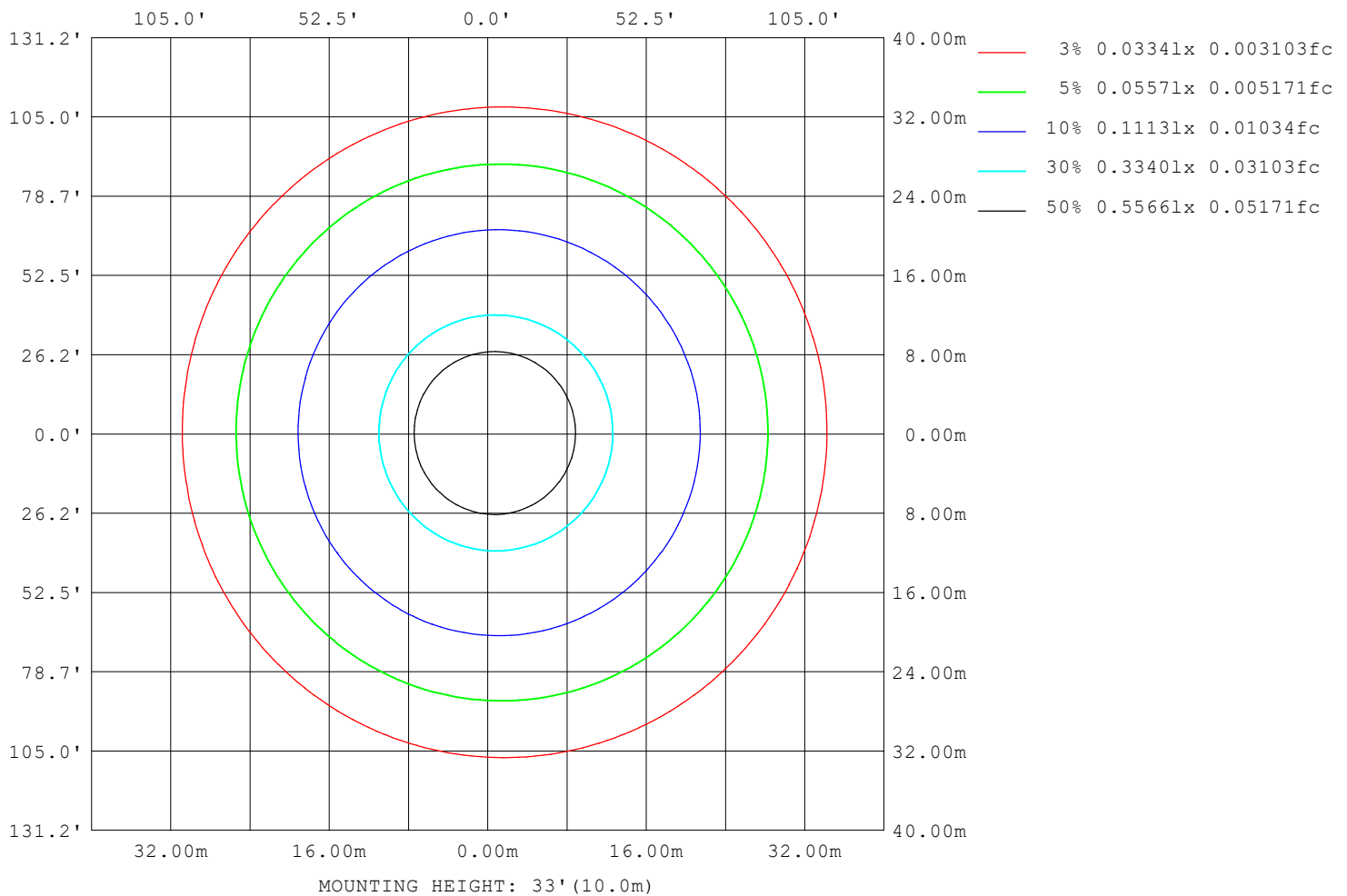
Note: The Curves indicate the illuminated area and the average illumination when the luminaire is at different distance.

C Range: 0 - 360DEG
 C Interval: 10.0DEG
 Test Speed: MEDIUM
 Temperature: 25.3°C
 Operators:
 Test Date: 20 October 2022

γ Range: 0 - 180DEG
 γ Interval: 2.5DEG
 Test System: EVERFINE GO-2000A_V1 SYSTEM V2.00.456
 Humidity: 65.0%
 Test Distance: 6.265m [K=1.0000]
 Remarks:

ISOLUX DIAGRAM

NAME: 99LED839WW	TYPE:	WEIGHT: 1
SPEC.:	DIM.: F90	SERIAL No.: 0
MFR.: Elmark Industries JSC	SUR.: round	Shielding Angle:



C Range: 0 - 360DEG
C Interval: 10.0DEG
Test Speed: MEDIUM
Temperature: 25.3°C
Operators:
Test Date: 20 October 2022

γ Range: 0 - 180DEG
γ Interval: 2.5DEG
Test System: EVERFINE GO-2000A_V1 SYSTEM V2.00.456
Humidity: 65.0%
Test Distance: 6.265m [K=1.0000]
Remarks:

LED Avg.L Report

NAME: 99LED839WW	TYPE:	WEIGHT: 1
SPEC.:	DIM.: F90	SERIAL No.: 0
MFR.: Elmark Industries JSC	SUR.: round	Shielding Angle:

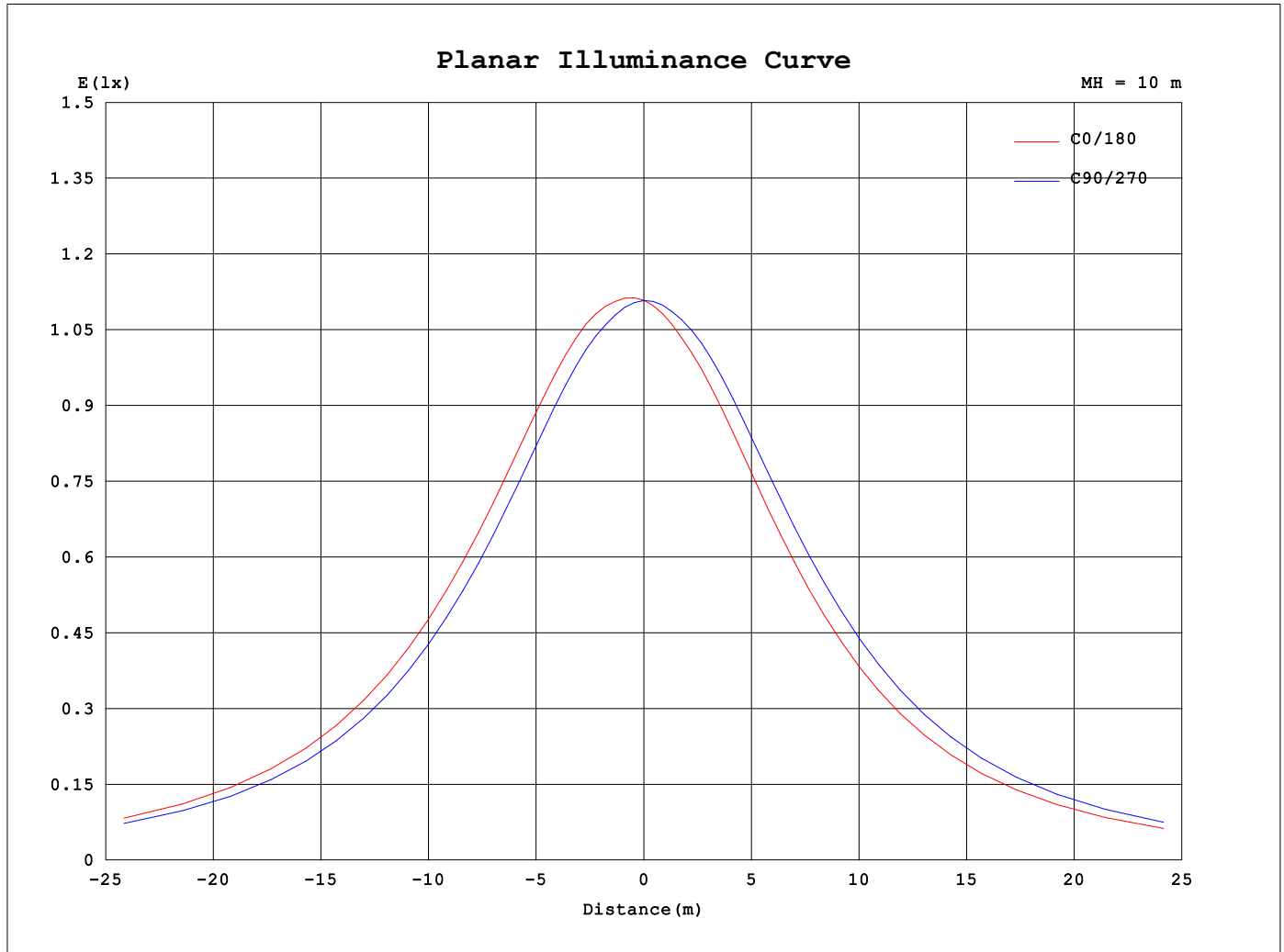
AvgL	cd/m2
L_0~180 (65) av	6023
L_0~180 (75) av	10062
L_0~180 (85) av	30262
L_90~270 (65) av	6108
L_90~270 (75) av	10228
L_90~270 (85) av	30798
L_45 (65) av	6067
L_45 (75) av	10156
L_45 (85) av	30591

Standard: GB/T 29293-2012

C Range: 0 - 360DEG
C Interval: 10.0DEG
Test Speed: MEDIUM
Temperature:25.3°C
Operators:
Test Date:20 October 2022

γ Range: 0 - 180DEG
γ Interval: 2.5DEG
Test System:EVERFINE GO-2000A_V1 SYSTEM V2.00.456
Humidity:65.0%
Test Distance:6.265m [K=1.0000]
Remarks:

Planar Illuminance Curve



C Range: 0 - 360DEG
 C Interval: 10.0DEG
 Test Speed: MEDIUM
 Temperature: 25.3°C
 Operators:
 Test Date: 20 October 2022

γ Range: 0 - 180DEG
 γ Interval: 2.5DEG
 Test System: EVERFINE GO-2000A_V1 SYSTEM V2.00.456
 Humidity: 65.0%
 Test Distance: 6.265m [K=1.0000]
 Remarks:

LUMINOUS DISTRIBUTION INTENSITY DATA

NAME: 99LED839WW	TYPE:	WEIGHT: 1
SPEC.:	DIM.: F90	SERIAL No.: 0
MFR.: Elmark Industries JSC	SUR.: round	Shielding Angle:

Table--1

UNIT: cd

C (DEG) γ (DEG)	0	10	20	30	40	50	60	70	80	90	100	110	120	130	140	150	160	170	180
0	111	111	111	111	111	111	111	111	111	111	111	111	111	111	111	111	111	111	111
5	113	112	112	112	112	112	112	111	111	111	110	110	110	110	110	110	109	109	109
10	115	115	114	114	114	113	113	112	112	111	111	110	110	109	109	108	108	108	108
15	118	118	117	117	116	115	115	114	113	112	111	111	110	109	109	108	108	108	108
20	121	120	120	119	118	117	116	115	114	113	112	111	110	109	109	108	108	108	108
25	123	123	122	121	120	119	118	117	116	114	113	112	111	110	109	108	107	107	107
30	126	125	125	124	123	122	120	119	117	116	114	113	111	110	109	108	107	107	107
35	129	128	127	126	125	124	122	121	119	117	115	114	112	111	109	108	108	107	107
40	132	131	130	129	128	126	125	123	121	119	117	115	113	111	110	109	108	108	108
45	135	134	133	132	131	129	127	125	123	121	119	117	115	113	111	110	109	108	109
50	138	138	137	135	134	132	130	128	126	123	121	118	116	114	112	111	110	109	109
55	142	141	140	139	137	135	133	131	128	125	123	120	118	115	114	112	111	110	110
60	145	144	143	142	140	138	136	133	131	128	125	122	119	117	115	113	112	111	111
65	148	147	146	144	142	140	138	136	133	130	127	124	121	118	116	114	113	112	112
70	150	149	148	147	145	143	140	138	135	132	129	125	123	120	117	115	114	113	113
75	152	151	150	149	147	145	142	139	136	133	130	127	124	121	118	116	115	114	114
80	154	153	152	150	149	146	144	141	138	134	131	128	125	122	119	117	115	114	114
85	154	154	153	151	150	147	145	142	139	135	132	129	125	123	120	118	116	115	115
90	155	154	153	152	150	148	145	142	139	136	132	129	126	123	120	118	116	115	115
95	155	154	153	152	150	148	145	142	139	136	132	129	126	123	120	118	116	115	115
100	154	154	153	152	150	148	145	142	139	135	132	129	125	123	120	118	116	115	115
105	153	153	152	150	149	147	144	141	138	135	131	128	125	122	119	117	115	114	114
110	151	151	150	149	147	145	143	140	137	133	130	127	124	121	118	116	115	114	114
115	149	149	148	147	145	143	141	138	135	132	129	125	122	120	117	115	114	113	113
120	147	146	146	144	143	141	138	136	133	130	127	124	121	118	116	114	113	112	112
125	144	143	143	141	140	138	136	133	130	128	125	122	119	116	114	112	111	110	110
130	140	140	139	138	136	135	133	130	128	125	122	119	117	114	112	111	110	109	109
135	136	136	135	134	133	131	129	127	125	122	119	117	115	112	110	109	108	107	107
140	132	132	131	130	128	127	125	123	121	119	116	114	112	110	108	106	105	105	105
145	125	125	125	124	122	121	119	118	116	114	112	110	107	106	104	103	102	102	102
150	116	117	116	116	114	112	110	110	109	107	105	103	101	99.3	98.0	97.0	96.3	95.8	95.8
155	105	105	105	104	103	101	98.8	98.5	97.9	97.3	95.7	94.0	92.4	91.0	89.9	89.1	88.4	88.0	88.0
160	90.4	90.7	91.0	90.6	89.1	87.5	85.6	84.6	85.3	84.8	84.6	83.2	81.5	80.6	79.9	79.2	78.5	78.2	78.1
165	73.3	73.4	73.2	72.9	72.1	71.2	70.0	69.0	69.4	70.4	70.2	69.8	68.8	68.0	67.4	67.0	66.5	66.3	66.3
170	53.5	53.4	52.9	52.6	52.0	51.6	51.0	50.7	50.9	52.4	52.9	53.2	53.0	52.6	52.0	51.8	51.4	51.3	51.4
175	23.1	23.0	22.6	22.8	22.6	23.0	24.0	25.6	27.4	28.0	27.9	28.2	27.9	27.8	27.5	27.5	27.3	27.4	25.8
180	1.49	1.49	1.49	1.49	1.49	1.49	1.49	1.49	1.49	1.49	1.50	1.49	1.50	1.49	1.50	1.49	1.49	1.49	1.50

C Range: 0 - 360DEG

C Interval: 10.0DEG

Test Speed: MEDIUM

Temperature:25.3°C

Operators:

Test Date:20 October 2022

γ Range: 0 - 180DEG

γ Interval: 2.5DEG

Test System:EVERFINE GO-2000A_V1 SYSTEM V2.00.456

Humidity:65.0%

Test Distance:6.265m [K=1.0000]

Remarks:

LUMINOUS DISTRIBUTION INTENSITY DATA

NAME: 99LED839WW	TYPE:	WEIGHT: 1
SPEC.:	DIM.: F90	SERIAL No.: 0
MFR.: Elmark Industries JSC	SUR.: round	Shielding Angle:

Table--2

UNIT: cd

C (DEG) γ (DEG)	190	200	210	220	230	240	250	260	270	280	290	300	310	320	330	340	350		
0	111	111	111	111	111	111	111	111	111	111	111	111	111	111	111	111	111		
5	109	110	110	110	110	110	111	111	111	111	112	112	112	112	112	112	113		
10	108	109	109	109	110	110	111	111	112	113	113	114	114	114	115	115	115		
15	108	108	109	110	110	111	112	113	114	114	115	116	117	117	117	118	118		
20	108	108	109	110	111	112	113	114	115	116	117	118	119	120	120	120	121		
25	108	108	109	110	111	113	114	115	117	118	119	120	121	122	123	123	123		
30	108	108	109	111	112	113	115	117	118	120	121	123	124	125	125	126	126		
35	108	109	110	111	113	115	116	118	120	122	123	125	126	127	128	129	129		
40	108	109	111	112	114	116	118	120	122	124	126	128	129	130	131	132	132		
45	109	110	112	113	115	118	120	122	124	127	129	130	132	133	134	135	135		
50	110	111	113	115	117	119	122	124	127	129	131	133	135	137	138	138	139		
55	111	112	114	116	119	121	124	127	129	132	134	136	138	140	141	142	142		
60	112	113	115	118	120	123	126	129	132	134	137	139	141	143	144	145	145		
65	113	115	116	119	122	125	128	131	134	137	139	142	144	145	147	147	148		
70	114	115	118	120	123	126	129	132	136	139	141	144	146	148	149	150	150		
75	115	116	118	121	124	127	130	134	137	140	143	146	148	150	151	152	152		
80	115	117	119	122	125	128	131	135	138	141	144	147	149	151	153	153	154		
85	116	117	119	122	125	128	132	135	139	142	145	148	150	152	153	154	155		
90	116	117	119	122	125	128	132	135	139	142	145	148	150	152	154	155	155		
95	116	117	119	122	125	128	132	135	139	142	145	148	150	152	154	155	155		
100	115	117	119	122	124	128	131	135	138	141	144	147	150	152	153	154	154		
105	115	116	118	121	124	127	130	134	137	140	143	146	148	150	152	153	153		
110	114	115	117	120	123	126	129	132	136	139	142	144	147	149	150	151	152		
115	113	114	116	118	121	124	127	131	134	137	140	142	145	146	148	149	150		
120	112	113	115	117	120	122	125	129	132	135	137	140	142	144	145	146	147		
125	111	112	113	115	118	120	123	126	129	132	134	137	139	141	142	143	144		
130	109	110	111	113	115	118	121	123	126	129	131	134	136	137	139	140	140		
135	107	108	109	111	113	115	118	121	123	126	128	130	132	133	135	136	136		
140	105	106	107	109	110	112	115	117	120	122	124	126	127	129	130	131	132		
145	102	102	103	104	106	108	110	112	114	116	118	120	121	123	124	125	126		
150	96.0	96.5	97.1	98.1	99.5	101	103	105	107	109	110	112	113	115	116	117	116		
155	88.0	88.4	88.9	89.8	90.9	92.3	93.8	95.5	97.1	98.7	100	102	103	104	105	104	104		
160	78.2	78.5	79.0	79.7	80.5	81.4	82.3	84.1	85.6	87.1	88.4	89.8	91.0	91.6	90.8	89.8	90.5		
165	66.3	66.6	66.7	66.8	67.9	68.6	69.4	70.5	71.8	73.1	74.1	75.1	75.5	75.0	73.6	72.3	71.7		
170	51.1	50.7	50.4	50.5	51.8	52.7	53.9	54.6	55.2	55.8	56.0	55.9	55.4	55.0	54.2	53.4	51.7		
175	25.8	26.3	26.5	27.0	27.2	27.8	28.0	28.4	28.3	28.6	28.4	28.6	28.4	28.4	27.8	26.2	23.9		
180	1.50	1.49	1.49	1.49	1.49	1.49	1.49	1.49	1.49	1.49	1.49	1.49	1.49	1.49	1.49	1.49	1.49		

C Range: 0 - 360DEG

C Interval: 10.0DEG

Test Speed: MEDIUM

Temperature:25.3°C

Operators:

Test Date:20 October 2022

γ Range: 0 - 180DEG

γ Interval: 2.5DEG

Test System:EVERFINE GO-2000A_V1 SYSTEM V2.00.456

Humidity:65.0%

Test Distance:6.265m [K=1.0000]

Remarks: